



SCT-16B

FEATURE

- Split-core type with clip-on design, easy installation at set-up devices and distribution board
- Built-in circuit protection from over voltage even secondary circuit open
- Compact size works up to 120A AC
- Cost-effective solution
- Applicable for power saving facilities and overload protection systems
- Applicable for 5A secondary output of current transformer
- Isolated plastic case recognized according to UL 94-V0

SPECIFICATION

Model no.	SCT-16B
Primary Current Range	10mA ~ 120A RMS (50/60Hz), $RL \leq 10\Omega$
Application frequency	10~5KHz
Accuracy of the Linearity	CLASS 1.0 , $RL \leq 10\Omega$
Maximum Primary Current	300A RMS continuous
Primary Conductor Hole	$\varnothing 16\text{mm}$
Output Features	refer to graphic
Coil of Secondary Circuit	3000 ± 2 turns
Coil Resistance of Secondary Circuit	$290\Omega \pm 10\%$ (at 25°C)
Enclosure Material	NYLON Flame Retardant (UL-94V0)
Output Cord Length	Typical 700 mm (different length also available with customer's request)
Max circuit voltage	AC 600V
Dielectric Strength	2500V / 1mA / 1min between primary and output
Open circuit protection	10.2V
Insulation Resistance	$> 100\text{M}\Omega$ at 500V DC between primary and output
Weight	approx. 70 g
Operating Condition	-20 ~ 60°C, below 80% R.H. no condensation
Storage Condition	-30 ~ 70°C, below 70% R.H. no condensation

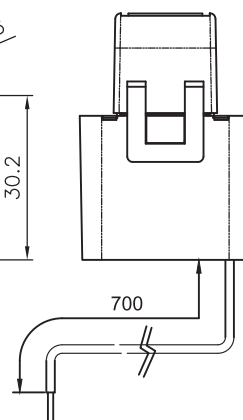
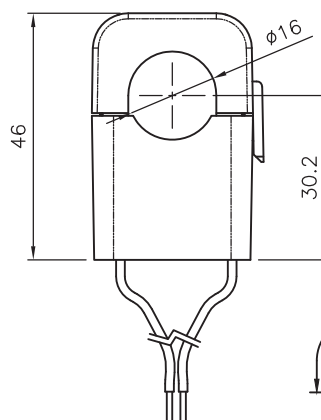
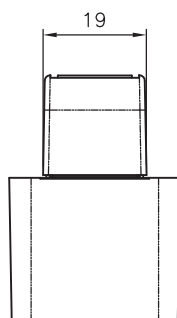
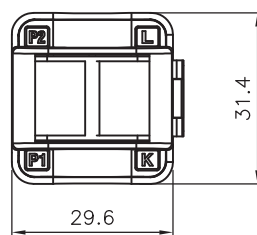
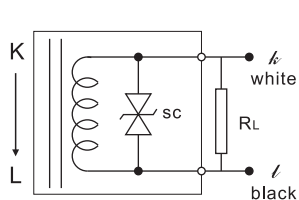
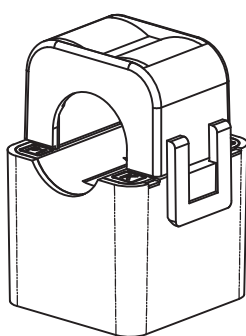
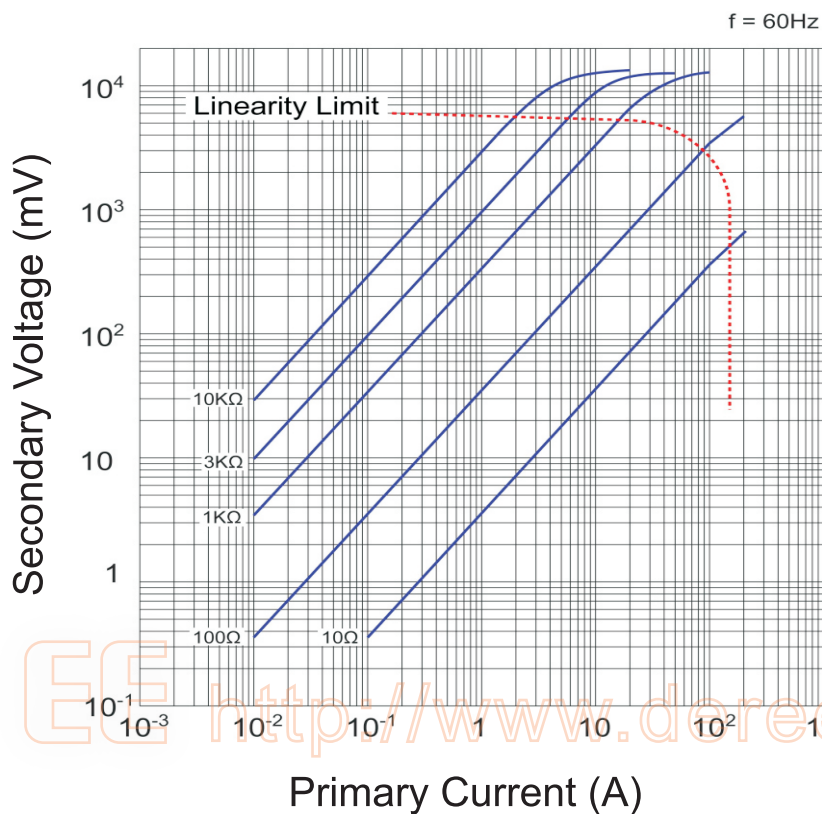
Remarks:

1. The accuracy is set according to the length of attached cable and it will be affected by changing to different length .
2. For the requirement of longer output cable , please inform us .
3. Specifications and appearance may be revised if needed without any prior notice . For more product information , please contact us .

DER EE[®] Split Core Current Transformer

SCT-16B

Graphic of Primary Current and Secondary Voltage



得益工業儀器有限公司
DER EE ELECTRICAL INSTRUMENT CO., LTD.

台灣 新北市中和區中山路二段351號7F
7F, No.351, Sec. 2, Chung Shan Rd., Chung Ho Dist.,
New Taipei City 23504, Taiwan
TEL:886-2-2226-6789(REP) FAX:886-2-2226-7979
E-mail:deree@deree.com.tw <http://www.deree.com.tw>

